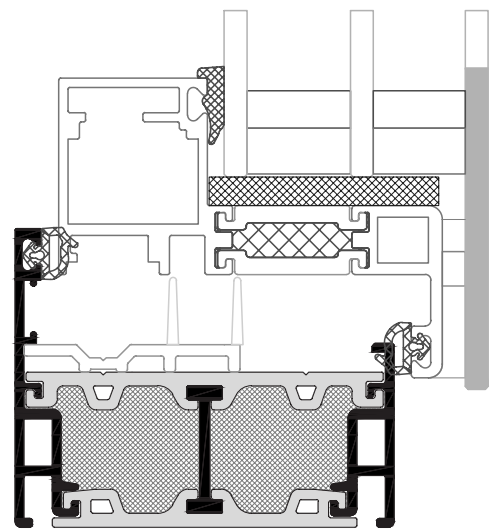
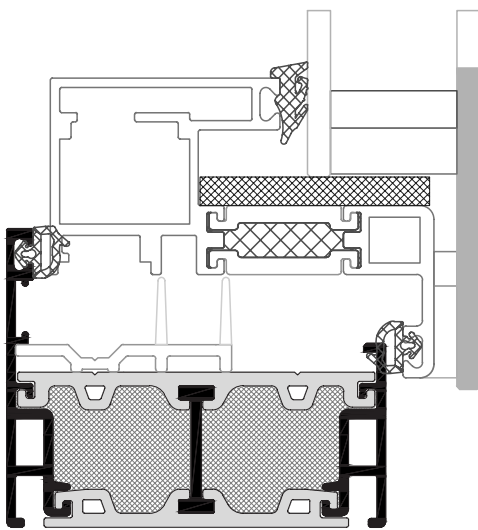




aluminium

Lumi Aluminium Features

Lumi Aluminium Window System has been developed to further enhance the performance and energy efficiency of our window suites. It is eco-friendly, sustainable, fully certified, patented aluminium window system. Measuring 66 mm in depth. It can be glazed both with double glazing 30mm units or triple glazing 46mm units.



Construction

A double glazed or triple glazed unit bonded to an internal core of high strength, thermally broken aluminium and insulated profile.

External Finishing

A band of ceramic colour has been fused at 700° to the glass inside the glazing unit. Available in two different colours, fully protected from the elements.

Lumi Aluminium Features

Profile system

- 66mm frame depth.
- Double seal gaskets.
- Aluminium frames thermally broken and insulated

Thermal insulation

- Thermal transmission coefficient window up to $U_w=1.55 \text{ W/(m}^2\text{K)}$ for double glazing
- Thermal transmission coefficient window up to $U_w=1.1 \text{ W/(m}^2\text{K)}$ for triple glazing

Glazing units

- 30mm double glazed units, (4-22-4) toughened glass
- 46mm triple glazed units, (4-18-4-16-4) toughened glass for maximum insulation and noise reduction.

Gaskets

- Inserted EPDM gaskets for excellent thermal performance.

Security

- High security lock system.
- Kitemarked glass.
- Heavy Duty hinges as standard.

Hardware fixing

- The hinge and lock components are fixed through aluminium and steel for efficient load transfer.

Maximum sizes

- 2200mm x 1600mm for fixed units
- 1500mm x 800mm for opening casement.
- special sizes available on request

System Testing results

- Tested to BS 6375 - 1 : 2015 + A1 2016 and BS 6375 - 2 : 2009
- Air Tightness = Class 4 : 600 Pa
- Water Tightness = Class E900 (900Pa)
- Wind Resistance = 2400 (Class E2400A)
- Resistance to Racking and Static Torsion = Class 3
- Resistance to Repeated Opening and Closing = Class 3 (20K Cycles)
- Operating Forces = Class 1
- Tested to PAS24 : 2016 for Security



This new version of the Lumi award winning glazing system is perfect for the replacement market. With its wall-to-wall glass it looks exactly the same as the Lumi80, but is designed to fit perfectly into replacement projects and is available for external in Anthracite Grey and Black and a full range of RAL for internal colours.

The sash corners are mechanically reinforced with metal cleats and chemically bonded with structural adhesive. This ensures a long service life with very low expansions and a smooth operation.

The system has been tested to BS 6375 - 1: 2015 + A1 2016 and security tested to PAS 24: 2016. It reaches and excels the industry standards in weather and performances in all tests.

All Lumi products are fitted with a high security multi-cam lock system. All the glass is kitemarked.

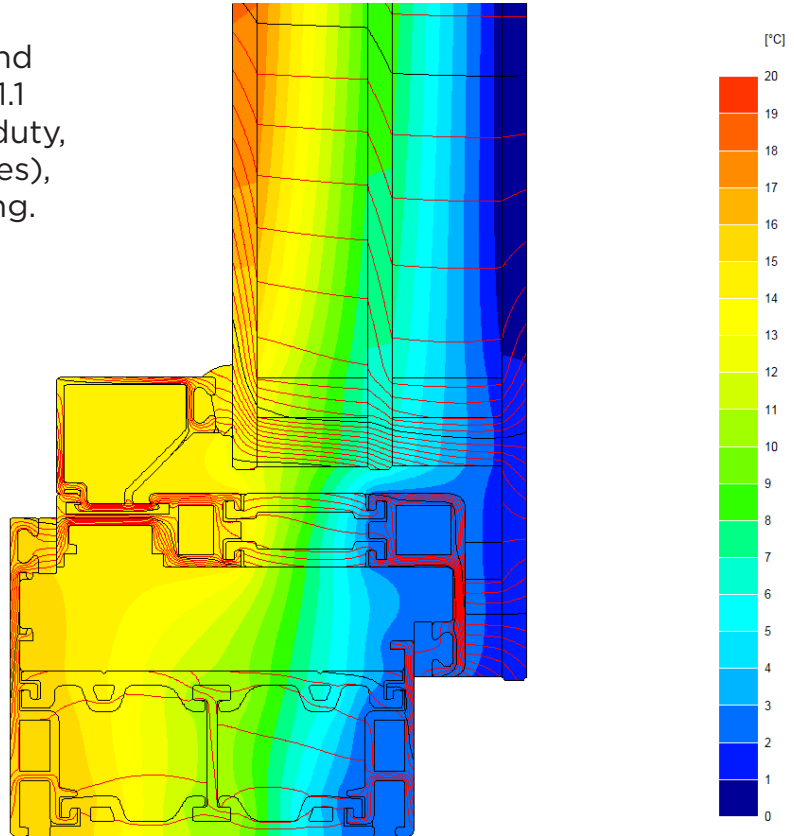


With no external framing around the wall-to-wall glass Lumi is simple and easy to clean and maintain.

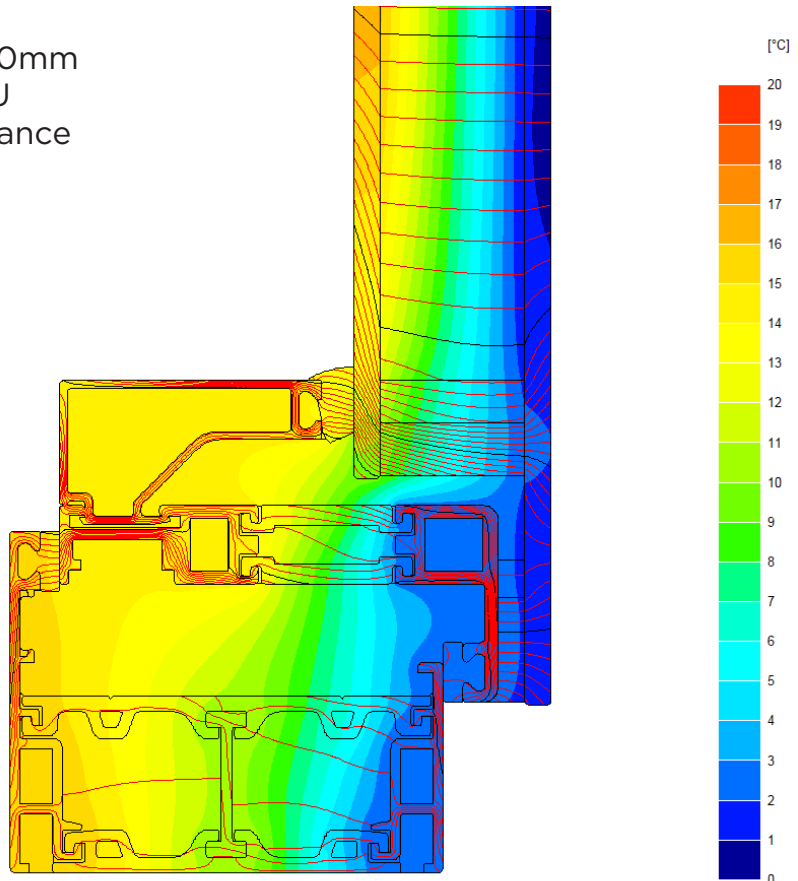
Concealed hinges will allow Lumi to work smoothly for many years.

Lumi Aluminium Features

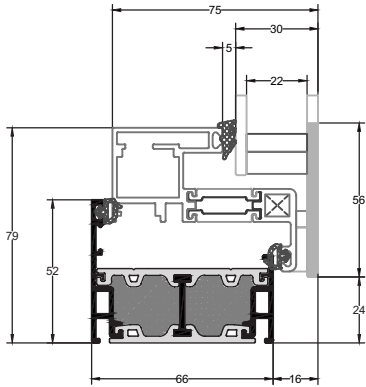
Lumi Aluminium has excellent patented thermal technology and can achieve U-values as low as 1.1 W/m²K. It also boasts a heavy duty, Category 3 status (20,000 cycles), for repeated opening and closing.



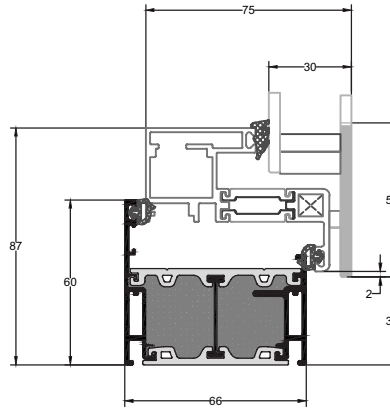
U-values based on window 1230mm x 1480mm high with full sash. U values are calculated in accordance with BS EN 10077-2:2017



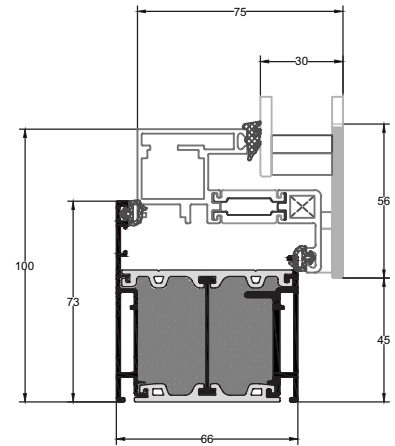
Lumi Aluminium Sections D/G Opening sash



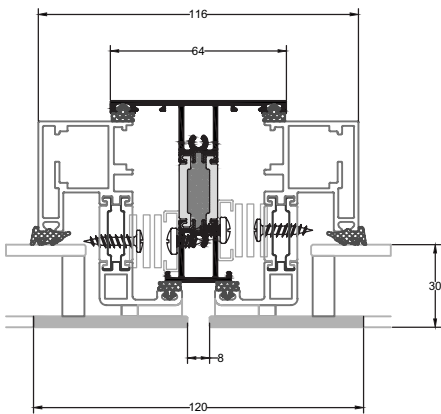
FRAME 52mm SECTION



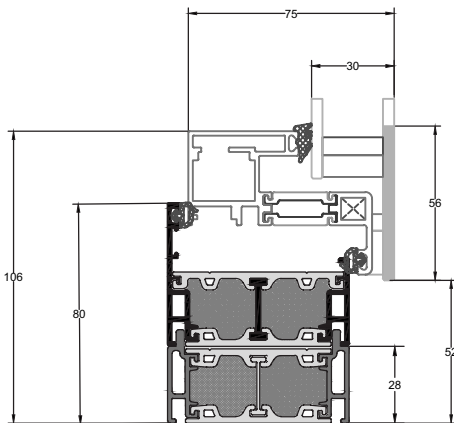
FRAME 60mm SECTION



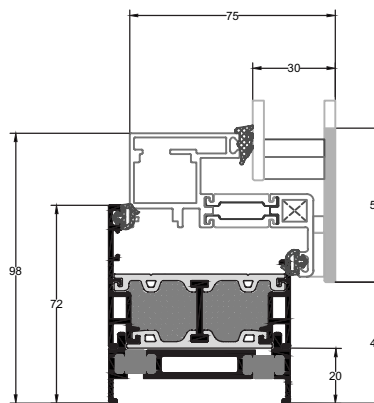
FRAME 73mm SECTION



TRANSOM 64mm SECTION

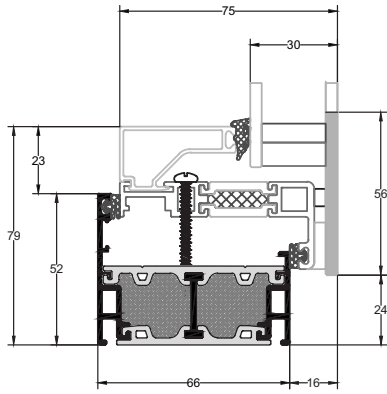


FRAME 52mm AND 28mm
EXTENSION SECTION

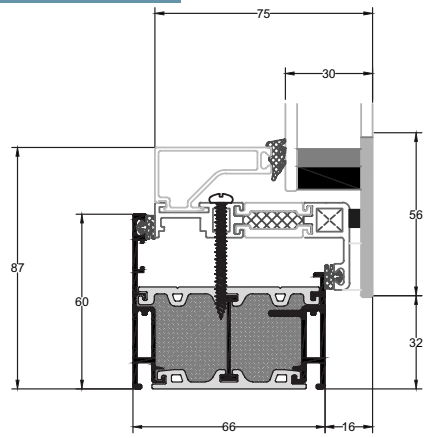


FRAME 52mm AND 20mm
EXTENSION SECTION

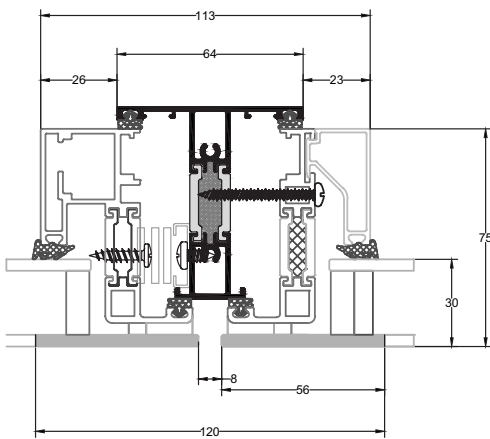
Lumi Aluminium Sections D/G Picture sash



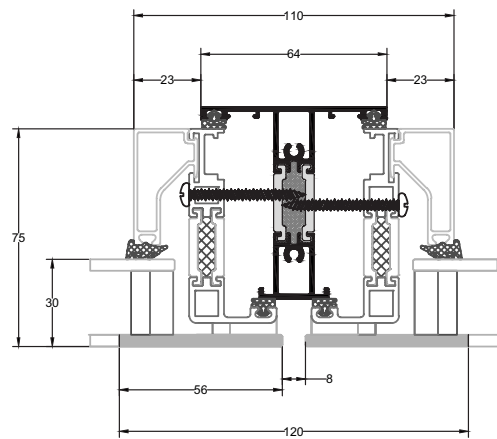
FRAME 52mm SECTION



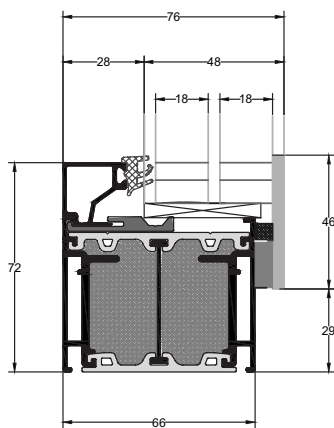
FRAME 73mm SECTION



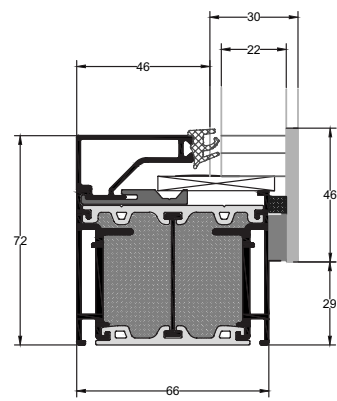
TRANSOM 64mm SECTION



TRANSOM 64mm SECTION

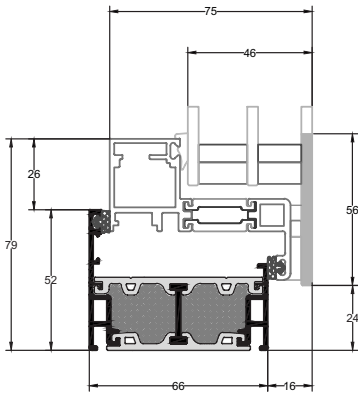


SINGLE PICTURE UNIT T/G SECTION

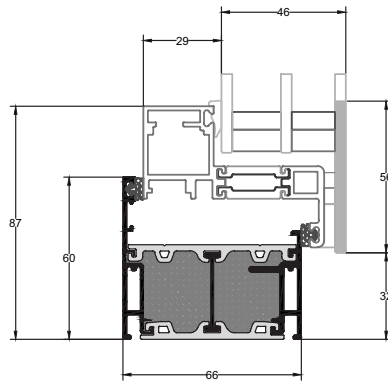


SINGLE PICTURE UNIT D/G SECTION

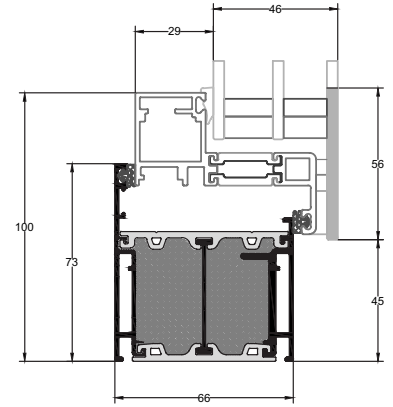
Lumi Aluminium Sections T/G Opening sash



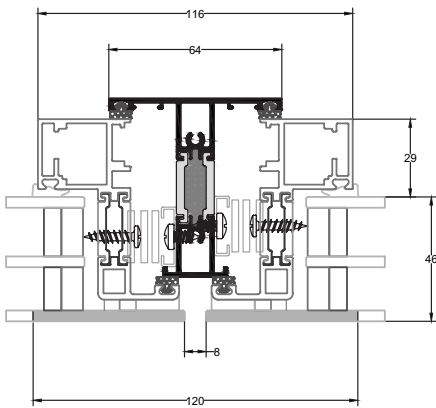
FRAME 52mm SECTION



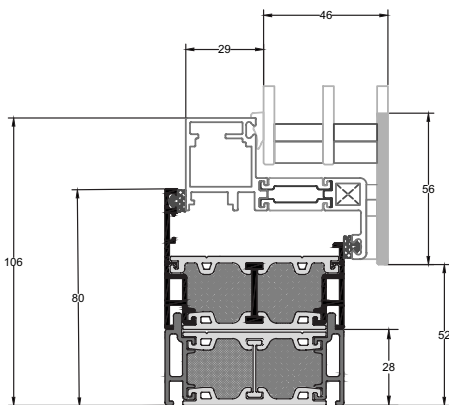
FRAME 60mm SECTION



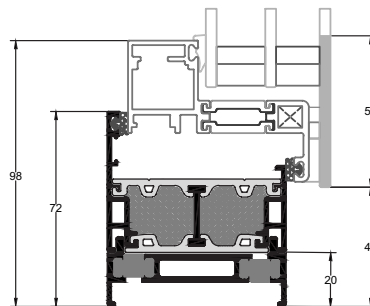
FRAME 73mm SECTION



TRANSOM 64mm SECTION



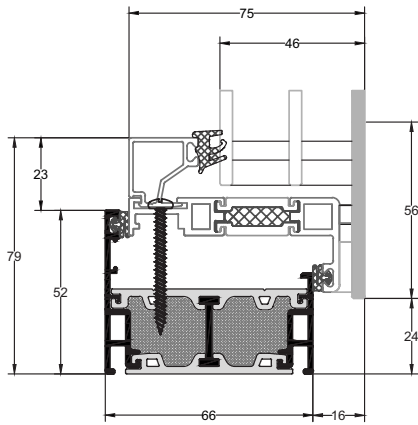
FRAME 52mm AND 28mm
EXTENSION SECTION



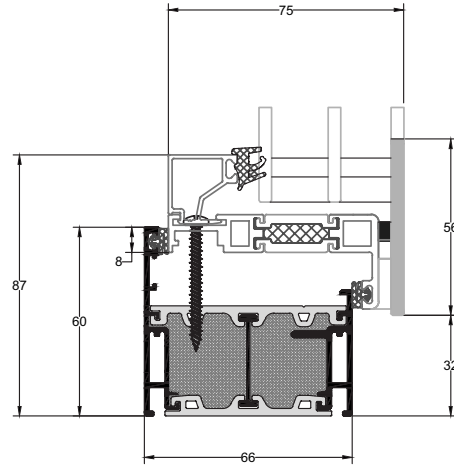
FRAME 52mm AND 20mm
EXTENSION SECTION

Lumi Aluminium Sections

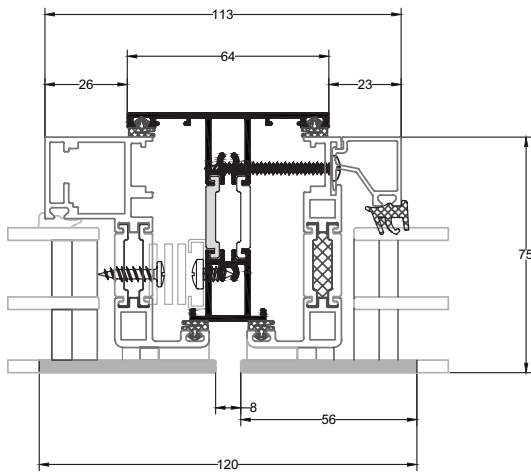
T/G Picture sash



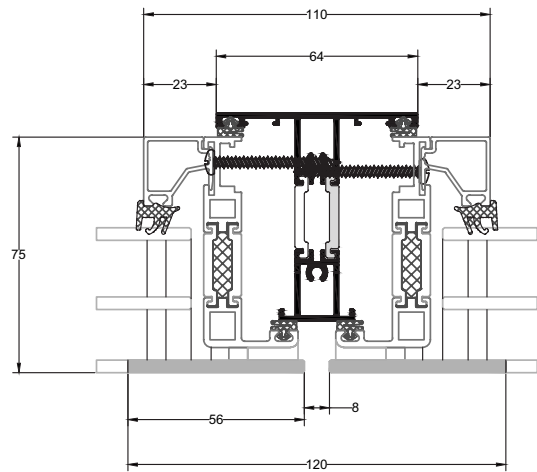
FRAME 52mm SECTION



FRAME 60mm SECTION

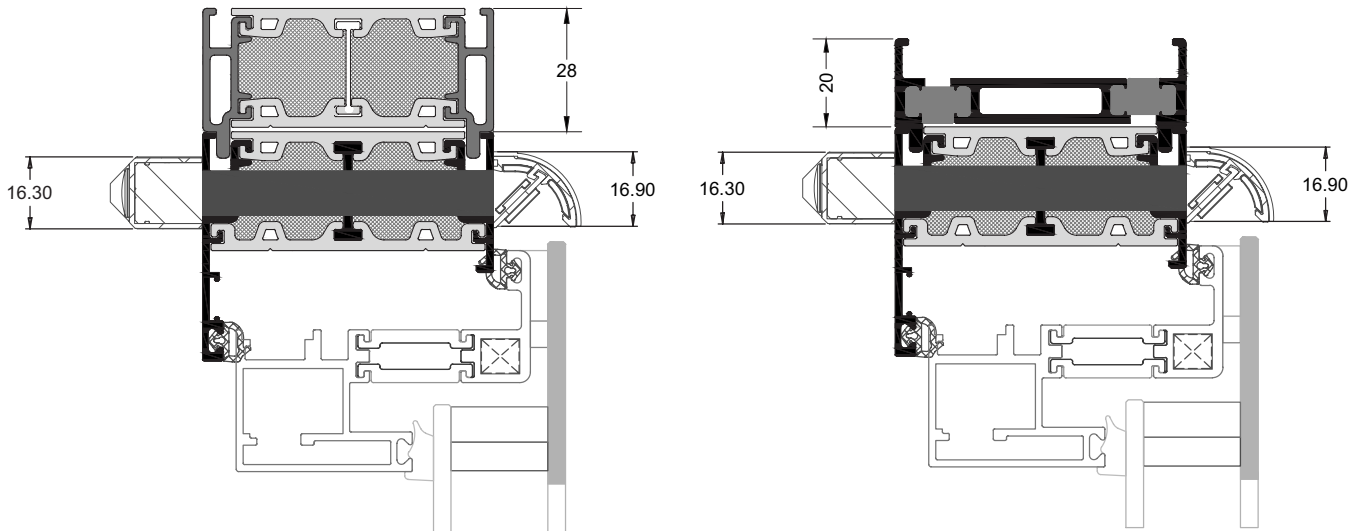


TRANSOM 64mm SECTION



TRANSOM 64mm SECTION

Lumi Aluminium Vents Options



Slot Trickle Option

In the closed position the slot trickle option provides upward deflecting, draught free, ventilation up to 2500mm²/m (Open Area)

Air Permeability

50 Pa 0.14 l/s (Closed Position)

Tested to BS EN 13141-1

Water Tightness

Pressure @ No Leakage 600 Pa

Tested to BS EN 13141-1

Acoustics

Under normal conditions the airvent SM 1000 achieved the following Sound Reduction results:

Position	Acoustic Detail
OPEN	Up to 32 db Dnt Rw
CLOSED	Up to 43 db Dnt Rw
OPEN	Up to 29 db Dne W
CLOSED	Up to 47 db Dne W

Acoustic test data available upon request

Bar Length

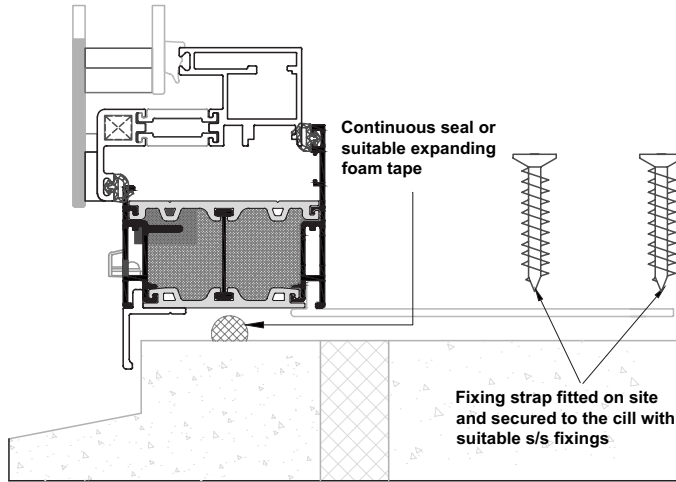
Internal vent 2.87m / External hood 2.6m

Geometric Modular Sizes

Geometric Open Area	Equivalent Area	Overall Slot Size	Overall Vent Length	Overall Hood Length
2000mm²	1417mm ²	10mm x 205mm	260mm	250mm
3000mm²	2204mm ²	10mm x 305mm	360mm	350mm
4000mm²	2985mm ²	10mm x 405mm	460mm	450mm
5000mm²	3676mm ²	10mm x 505mm	560mm	550mm
6000mm²	4492mm ²	10mm x 605mm	660mm	650mm

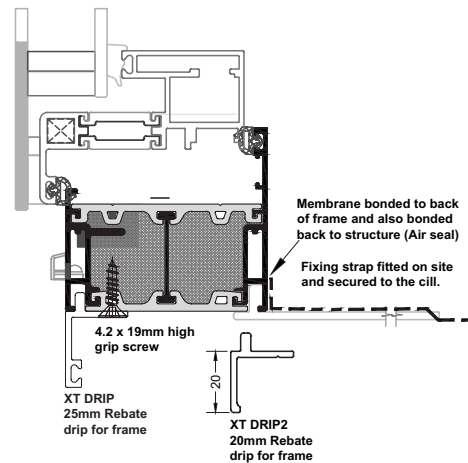
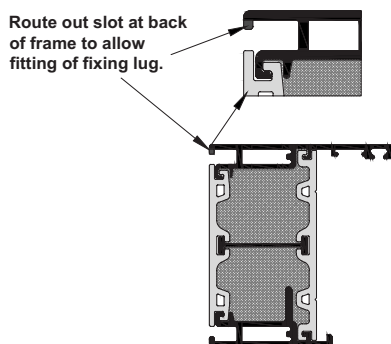
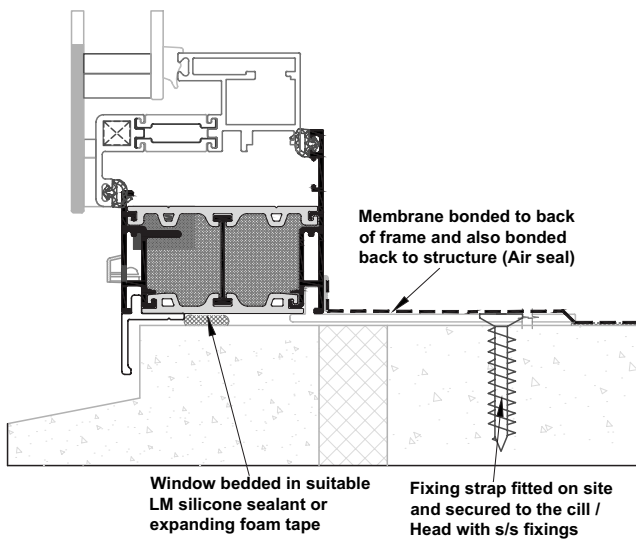
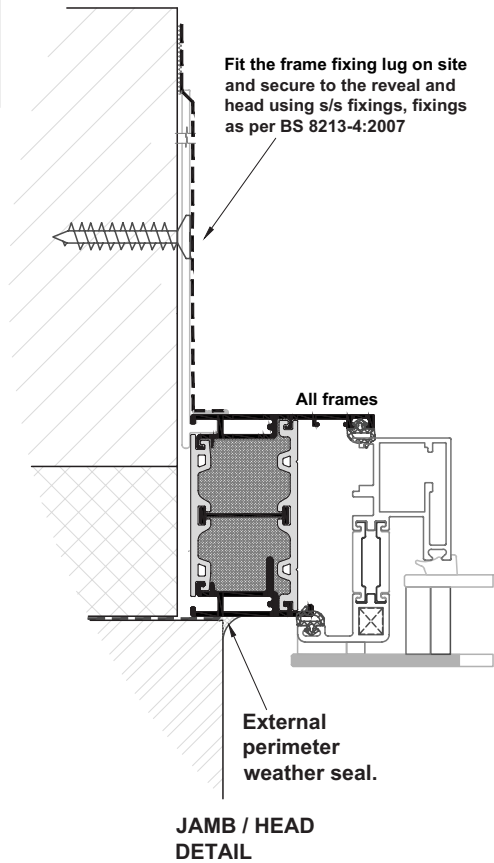
☰ Bespoke sizes available

Lumi Aluminium Installation

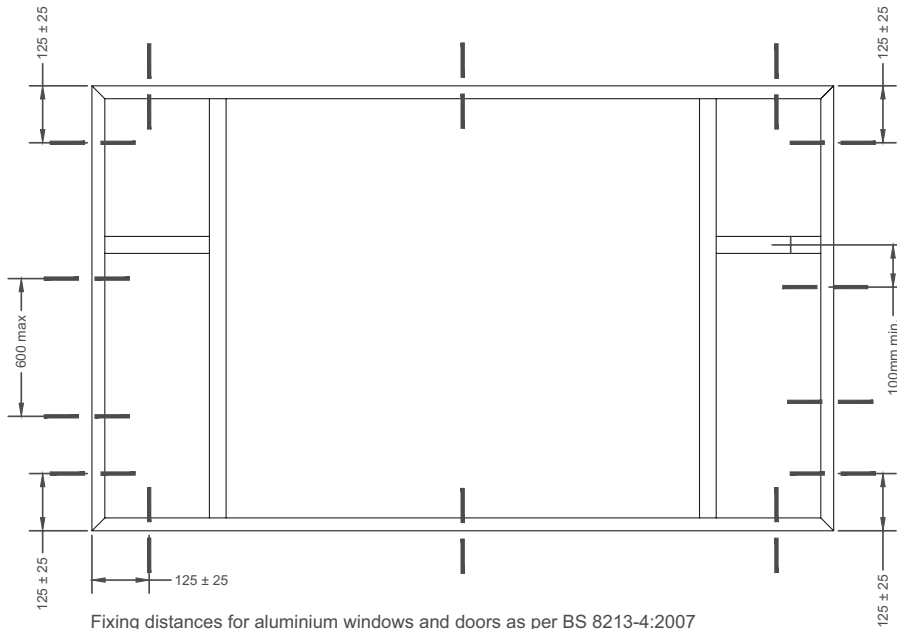


Fixing distances for aluminium windows and doors as per BS 8213-4:2007
Wherever practicable all four sides of the frame should be secured as follows:

1. Corner jamb fixings should be between 100mm and 150mm from the external corner
2. No fixings should be less than 100mm from the centre line of a mullion or transom
3. Intermediate fixings should be at centres no greater than 600mm
4. There should be a minimum of two fixings on each jamb.
5. On windows over 1800mm wide, central head and sub sill fixings should be provided.

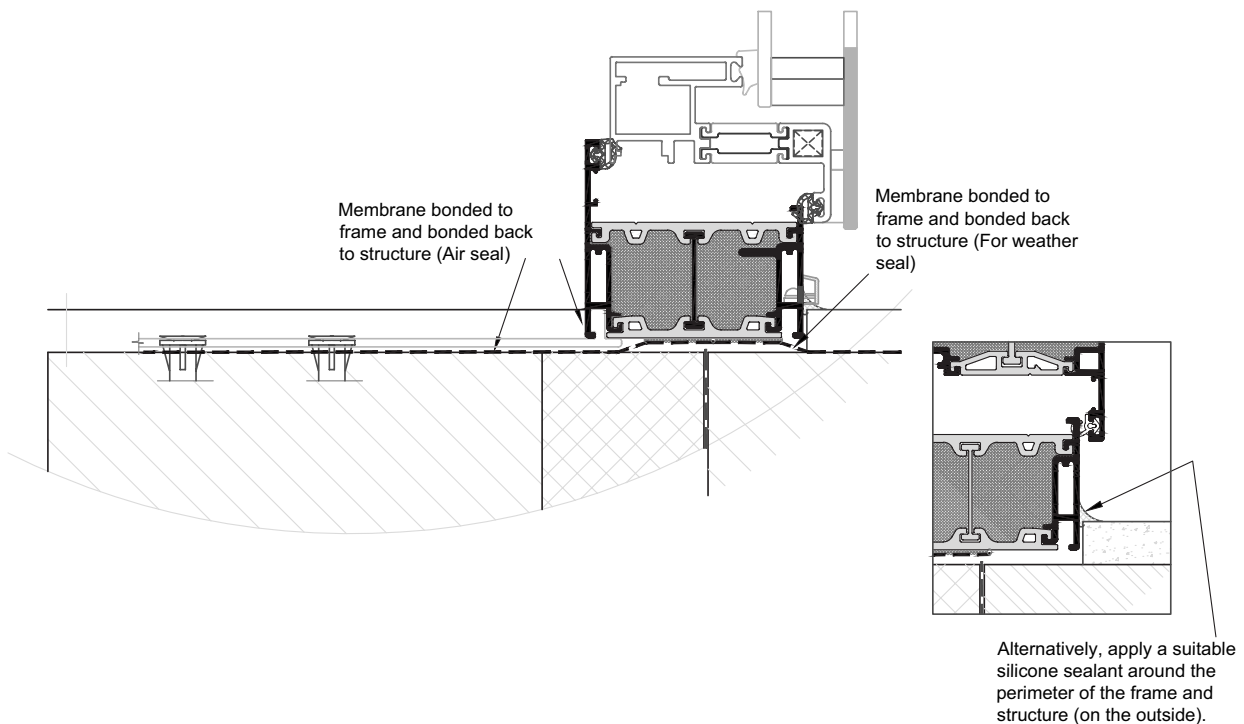


Lumi Aluminium Installation



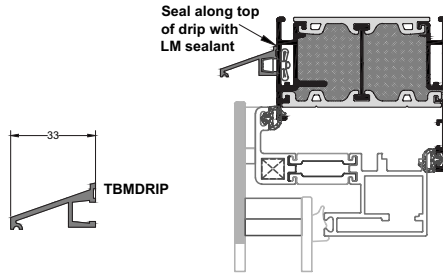
Fixing distances for aluminium windows and doors as per BS 8213-4:2007
Wherever practicable all four sides of the frame should be secured as follows:

1. Corner jamb fixings should be between 100mm and 150mm from the external corner
2. No fixings should be less than 100mm from the centre line of a mullion or transom
3. Intermediate fixings should be at centres no greater than 600mm
4. There should be a minimum of two fixings on each jamb.
5. On windows over 1800mm wide, central head and sub sill fixings should be provided.



Lumi Aluminium Installation

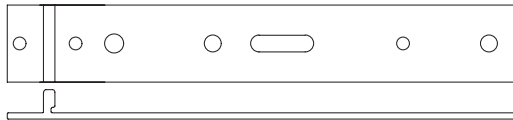
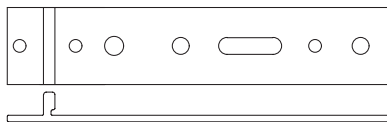
Drip bar for Exposed site elevations



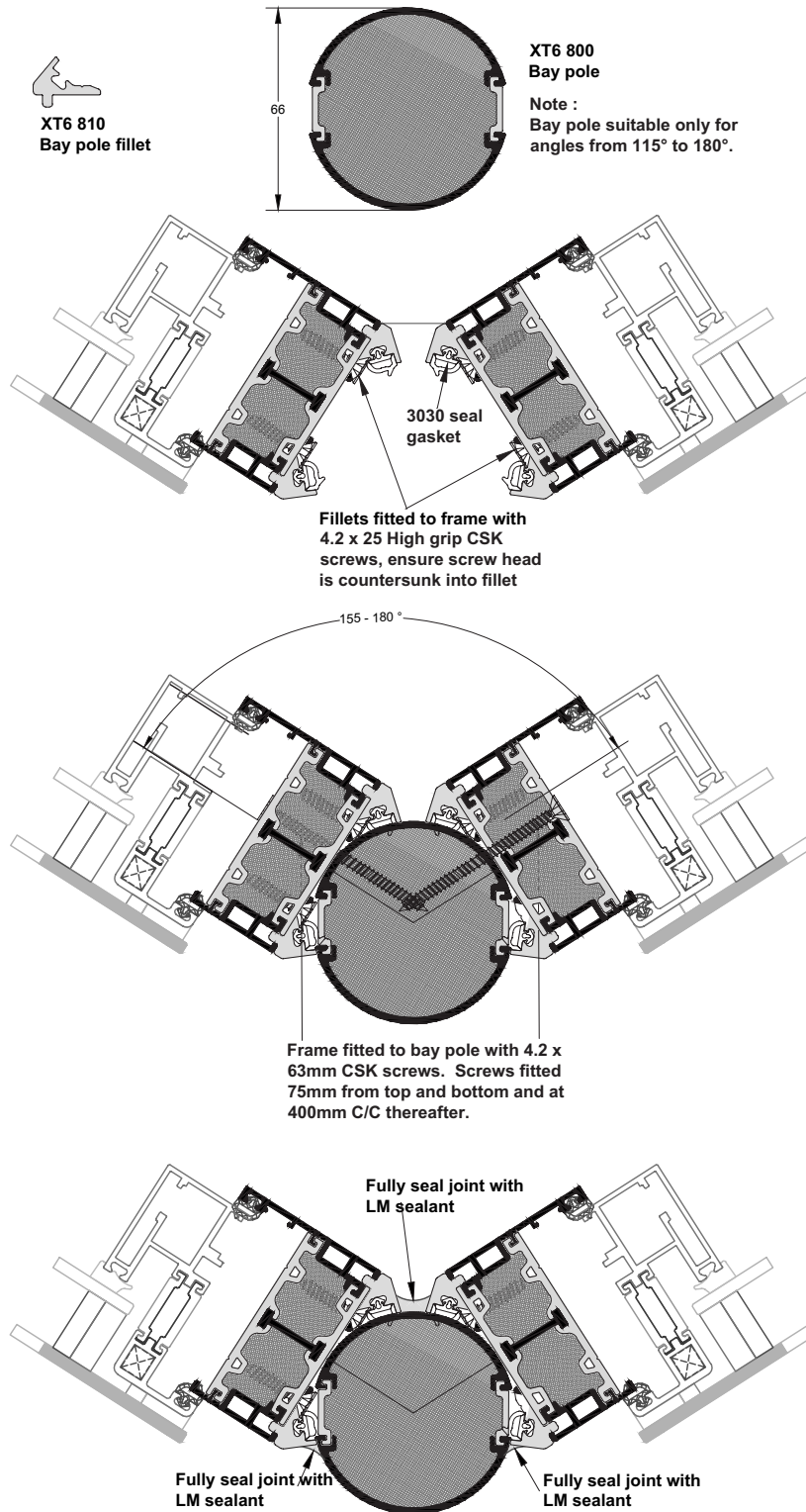
Powder Coated Flat Trims



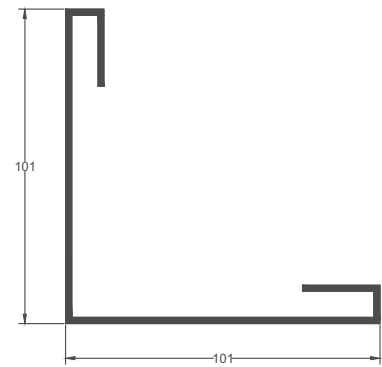
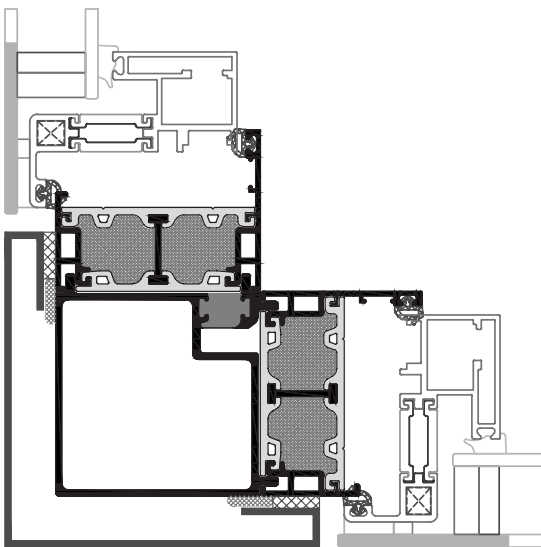
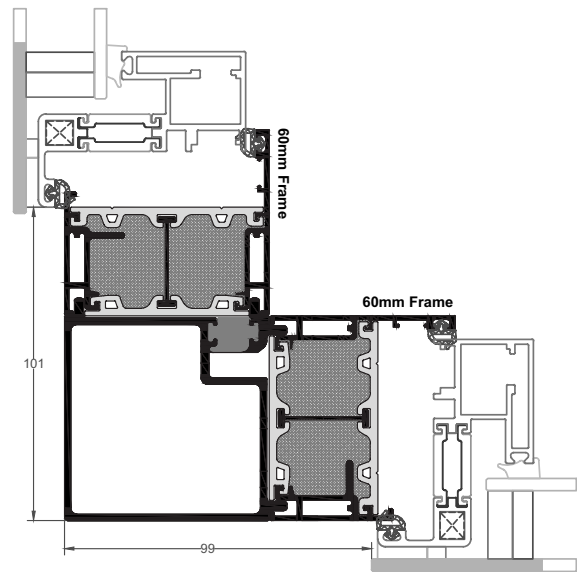
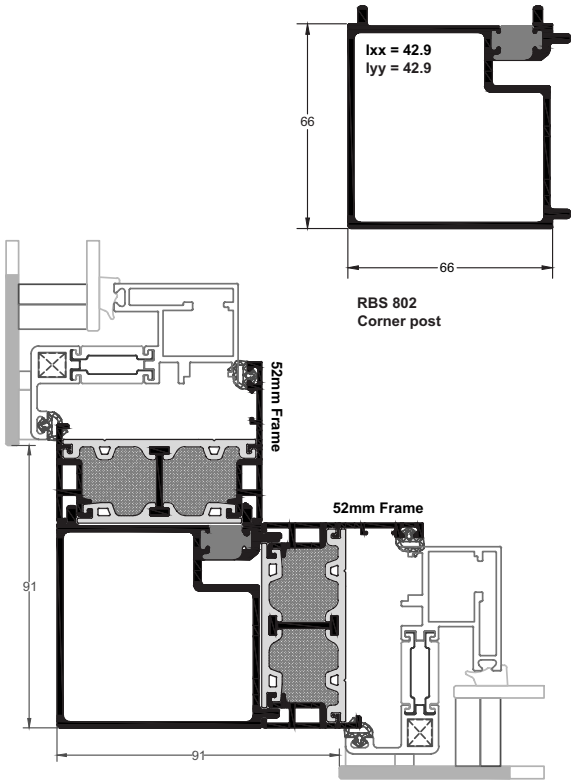
Fixing Lugs



Lumi Aluminium Bay Pole

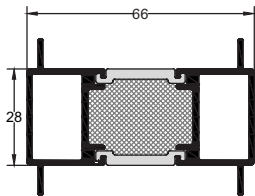


Lumi Aluminium Corner Post



Optional
Corner Cladding
101 x 101

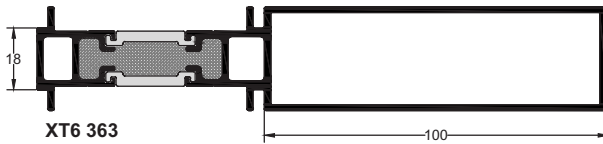
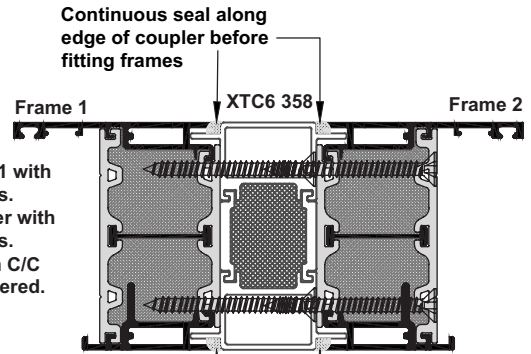
Lumi Aluminium Coupler Options



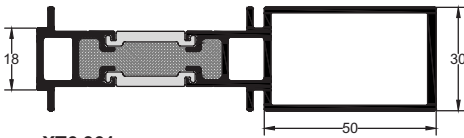
XTC6 358
28mm inline coupler

Fixing:

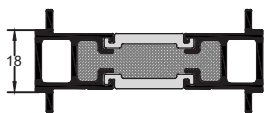
- ☒ Coupler fixed to frame 1 with 4.8 x 50mm CSK screws.
- ☒ Frame 2 fitted to coupler with 4.8 x 50mm CSK screws.
- ☒ Screws fitted at 400mm C/C approx and to be staggered.



XT6 363
Bulb coupler



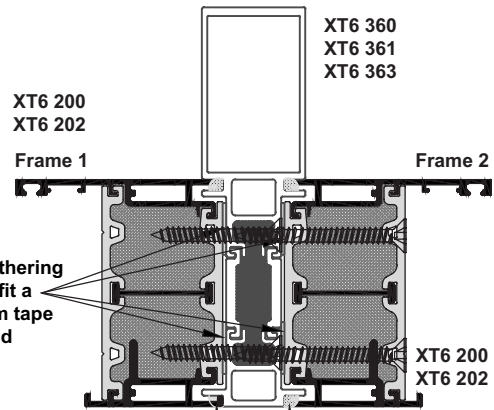
XT6 361
Bulb coupler



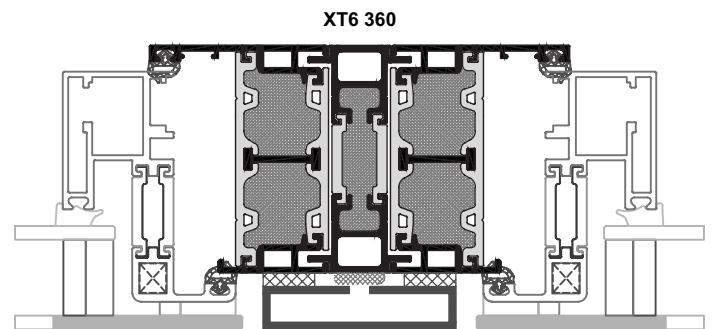
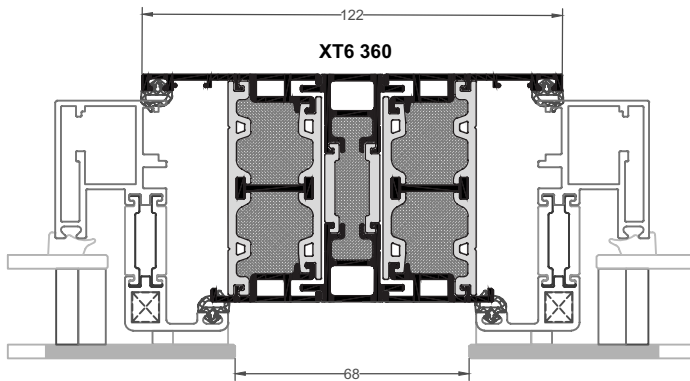
XT6 360
18mm in-line coupler

Fixing:

- ☒ Coupler fixed to frame 1 with 4.8 x 38mm CSK screws.
- ☒ Frame 2 fitted to coupler with 4.8 x 50mm CSK screws.
- ☒ Screws fitted at 400mm C/C approx and to be staggered.

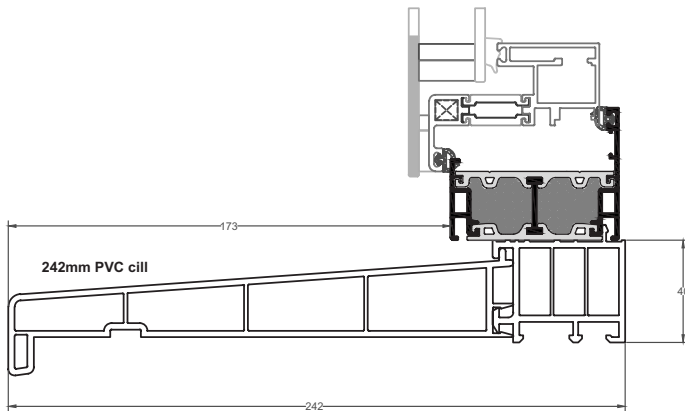
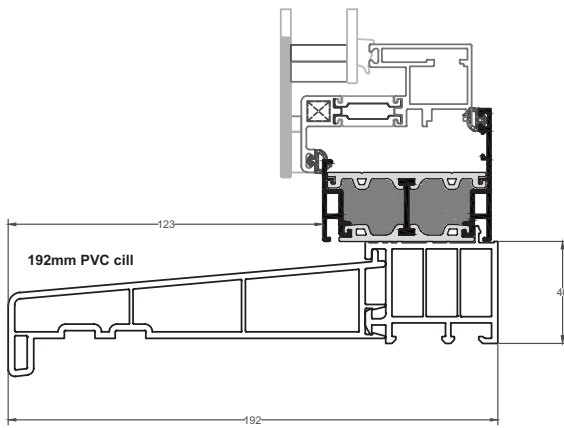
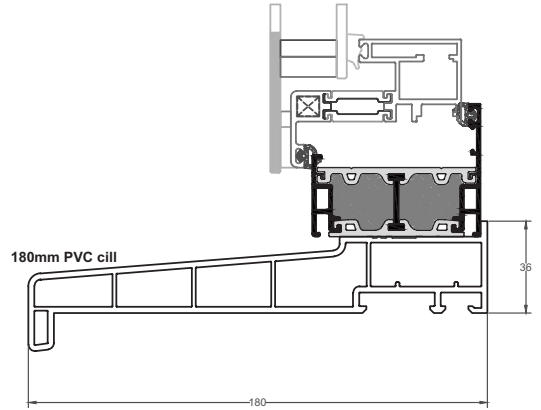
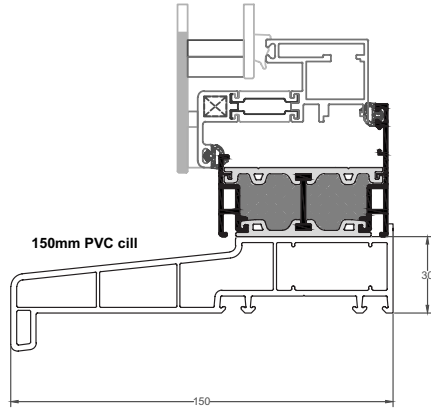


Continuous seal along edge of coupler before fitting frames

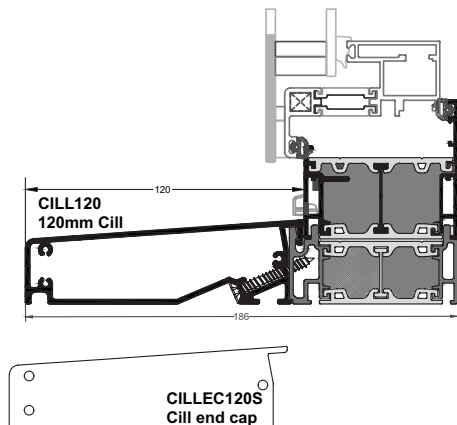
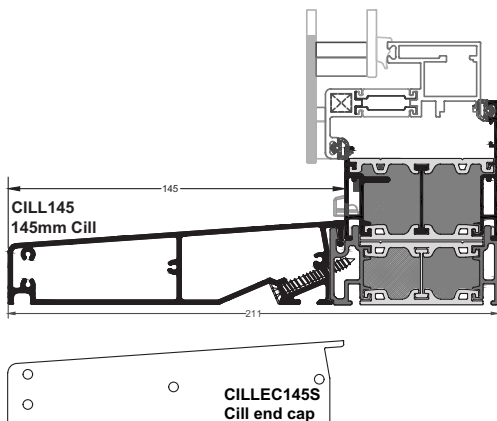
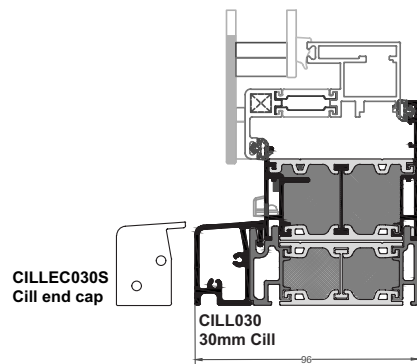
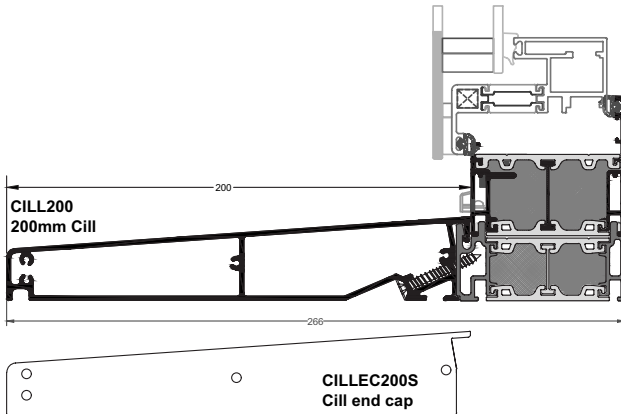
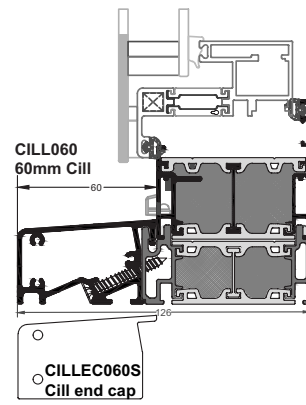
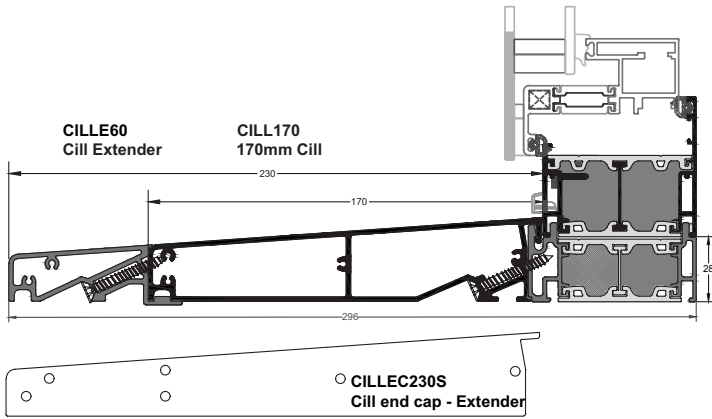
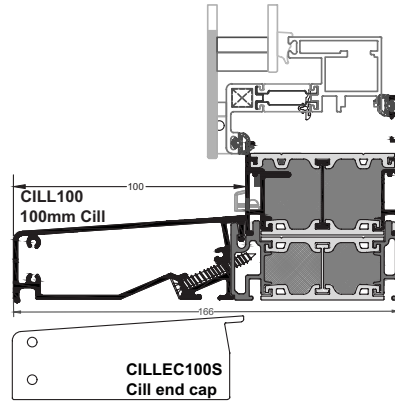
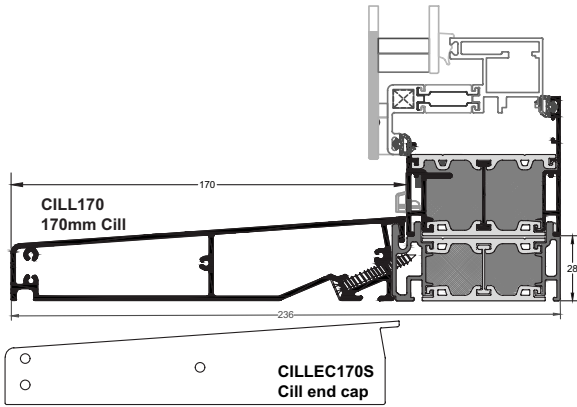


Optional Post Cladding
56mm

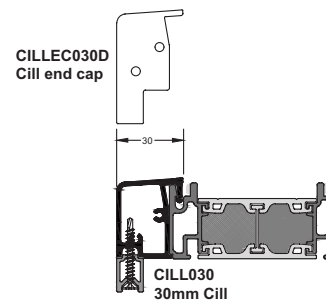
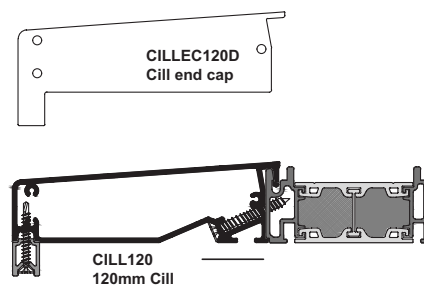
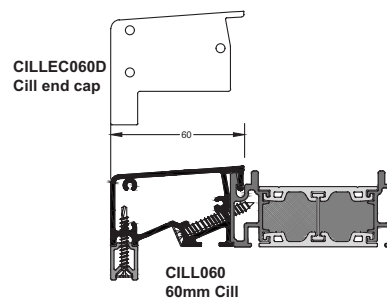
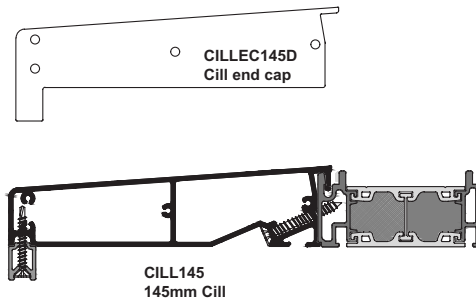
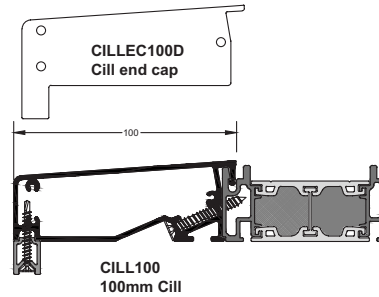
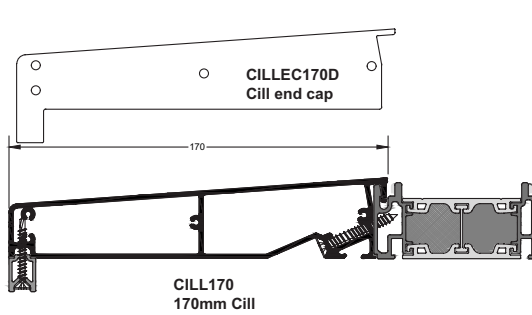
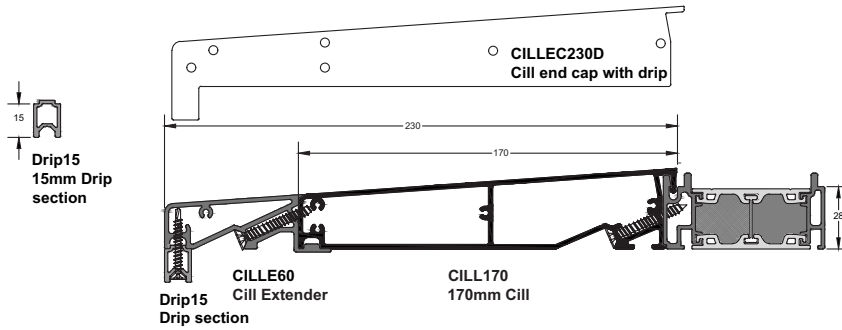
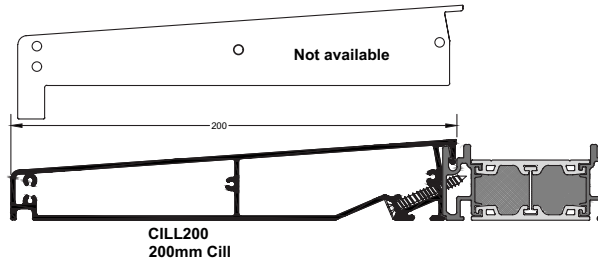
Lumi Aluminium-PVC Cill Options



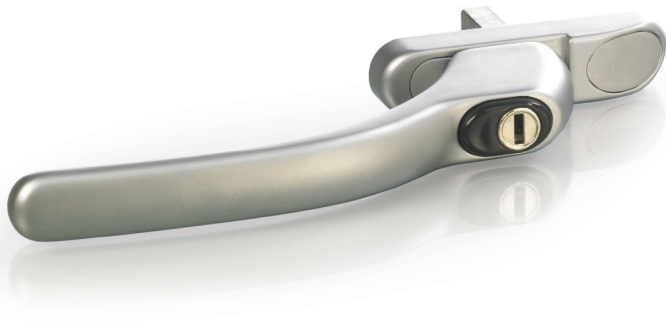
Lumi Aluminium Cill Options



Lumi Aluminium Cill Options



Lumi Aluminium Furniture

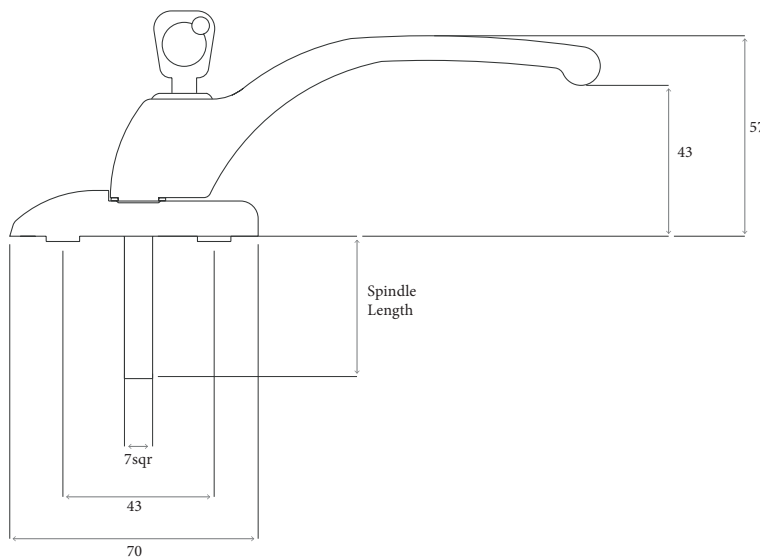
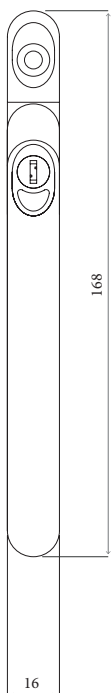


Features and Benefits

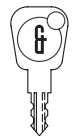
- Solid die cast zinc construction
- Heavyweight handle with sturdy feel
- Heavy duty sprung latching wedge
- Positive click on closing
- Long handle with 43mm window clearance
- Cover caps with coordinated finish
- Secured by Design
- Certified to BS 7950: 1997
- All finishes salt spray tested to 480 hours (BS EN 1670:Class 5)
- Tested to 50,000 cycles



Anthracite Black



Connoisseur Key



Front Cover Cap



Rear Cover Cap



Screws x2

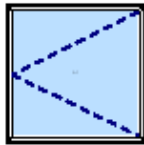


Lumi Aluminium

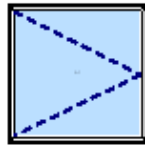
LUMI ALUMINIUM WINDOW



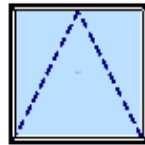
LA1



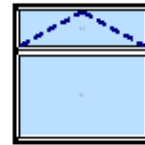
LA2.1



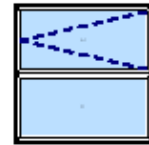
LA2.2



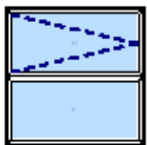
LA2.3



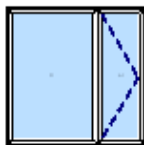
LA3



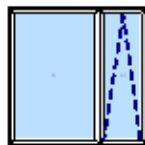
LA3.2



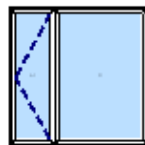
LL3.3



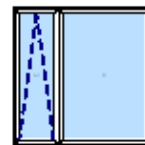
LA4.1



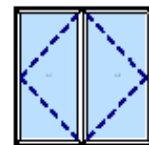
LA4.2



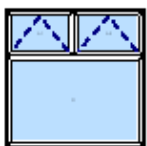
LA5.1



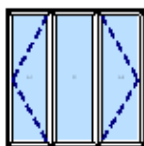
LA5.2



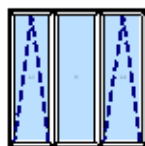
LA6



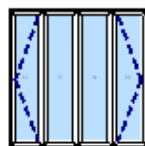
LA7



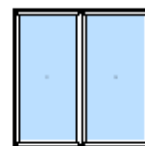
LA8.1



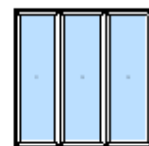
LA8.2



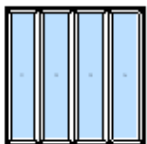
LL10



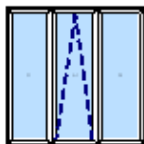
LA13



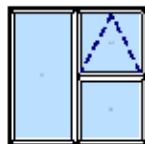
LA14



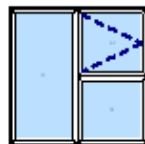
LA15



LA21



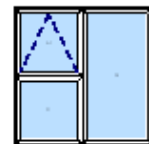
LA24.1



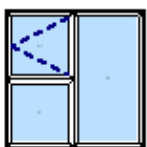
LA24.2



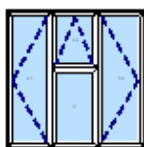
LA26



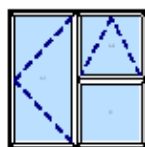
LA27



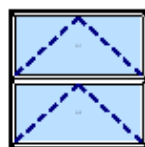
LA27.2



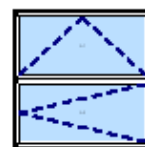
LA35



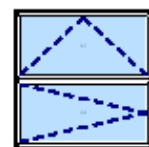
LA36



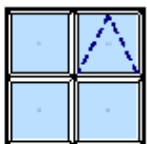
LA37.1



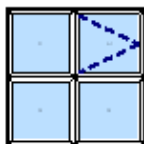
LA37.2



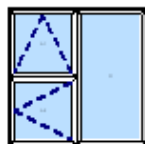
LA37.3



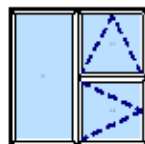
LA44



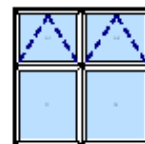
LA44.2



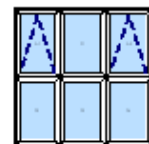
LA45.2



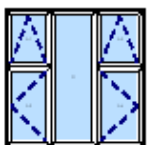
LA46.2



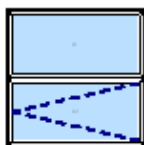
LA51



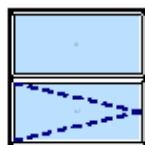
LA61.2



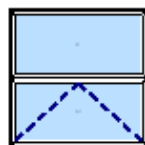
LA62



LA102.1



LA102.2



LA102.3



LA999

Remake
Options

0



From their Co. Antrim headquarters, Apeer design, manufacture and supply some of the industry's most advanced windows and doors. Perhaps best known for their range of energy efficient, highly secure, low maintenance composite doors, Apeer is respected as a pioneer in the door and glazing markets.

www.lumiwindows.com

Woodside Industrial Estate
Woodside Road
Ballymena, Co. Antrim
Northern Ireland BT42 4HX

T: 03300415014
T: 04825 632 200 (ROI)
sales@apeer.co.uk

Apeer is a registered brand of
New World Developments Ltd.

New World reserves the right to make
alterations to any of the featured
products without prior notice.